



What's New in FootPrints® 11 Asset Core

It's here. Cradle-to-grave management of your IT assets! With this latest release, FootPrints® 11 can help you intelligently account and budget your IT asset expenditures, reduce security and compliance risks, and increase user productivity anywhere on any device.



Financial Asset Management:

Easily plan for IT upgrades and replacements with end-to-end financial asset tracking and management

Having a set of tools that allows you to quickly understand the relationship between assets and their users, purchase costs, warranty and support information, useful life (depreciation), and other assets will provide the stepping stone that moves your IT department from cost center to business partner. With FootPrints 11 you can easily track asset lifecycle status cradle-to-grave. More specifically, FootPrints now offers:

- A comprehensive lifecycle view of a device including key data with regards to costs and depreciation, lifecycle status, asset assignment and ownership and procurement information
- Inventory of all relevant device lifecycle data for financial reporting and audits
- Integration with existing CMDB or built-in import wizard for data from other sources
- Reports by user, department or organization determining user/device lifespan, chargeback options and compliance data mapping with license renewal costs

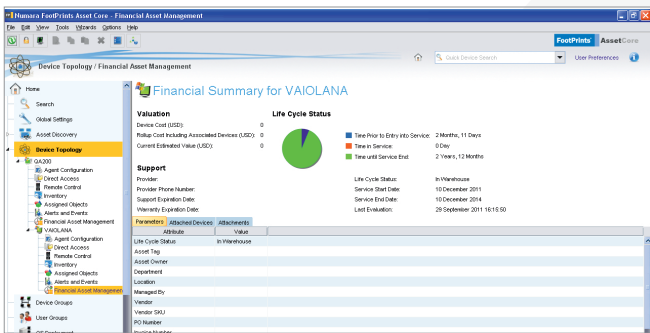


Virtual Infrastructure Management:

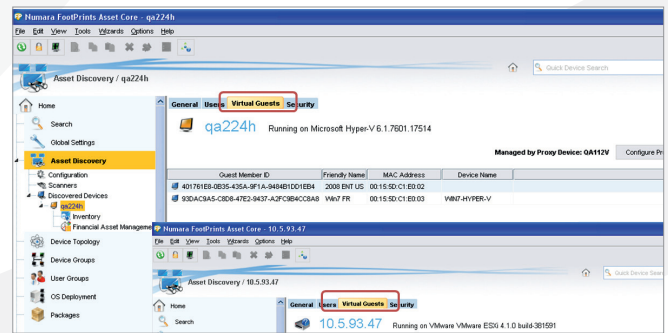
Dynamic global view of hybrid environment

Spinning up virtual machines on demand is easily becoming the norm, often resulting in orphaned virtual guests, over - or underutilized hypervisors, and a lack of visibility into your complete virtual infrastructure. Visually map assets and dependencies in a complex IT environment, reducing overhead and management investments as well as potential security risks through VM sprawl or rogue VMs. More specifically, FootPrints now offers:

- A single pane of glass view of physical and virtual assets
- Auto-discovery of remote bare-metal hypervisors like VMware® vSphere or Microsoft® Hyper-V
- Virtual infrastructure awareness with executive reports and dashboards
- Hypervisors mapped to their virtual guests
- Ability to manage state (start/stop/pause) of a virtual machine



The financial summary of an asset includes a dashboard of Life Cycle Status.



A discovered Microsoft Hyper-V Hypervisor and its inventory of virtual guests.

Additional New Features

Auto Agent Upgrades: Effortlessly upgrade your Asset Core agents. The auto-upgrade intelligently upgrades relay infrastructure and then moves to the agents associated to those relays. The end result is an up-to-date FootPrints Asset Core infrastructure that can take advantage of all the new functionality.

FootPrints Service Core Integration: New feature data staged to be available to Numara FootPrints Service Core Configuration Manager and Incident & Problem Manager.

Language and Platform Support:

- New languages - Brazilian and Portuguese
- Native Support for 64-bit Linux
- Support for importing from Lotus Domino and Novell e-Directory directory services



Intelligent Software Recognition: Balance software deployment with license compliance

Maintain software license compliance and understand usage with existing software catalog, automated software inventory normalization tools and pre-built reports and dashboards. Know who is using (or not using) software applications on your company network before purchasing additional licenses and enforce desktop standards by identifying and blocking applications that pose security risks, degrade network performance or damage productivity. With FootPrints 11 Intelligent Software Recognition, automatically detect and create licensable software units eliminating the time and risk involved when managing by hand. More specifically, FootPrints now offers:

- Automated detection and recognition of software suites and licensable units
- Normalizing of vendor information
- Categorizing and typing
- Providing views of supported, unsupported, and unidentified software
- Automated usage tracking
- Delivering powerful out-of-the-box Software Asset Management reports and dashboards



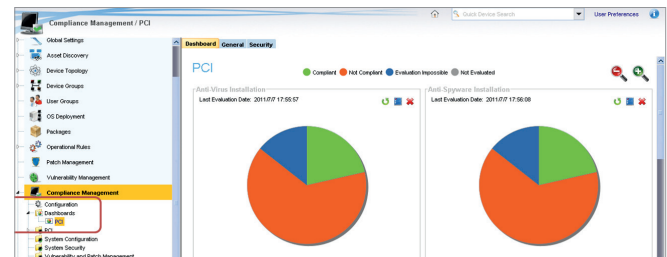
Intelligent Software Recognition automatically discovers suites and the installed applications that make up that suite.



Security Configuration Management: Manager-of-Managers for multiple security solutions deployed to your IT assets

With FootPrints 11 Compliance Manager you can gather and report on security configuration states across multiple security products including encryption, VPN, anti-spyware and personal firewalls. FootPrints 11 prevents security threats by actively managing typical points of entry like network connected user devices, IM clients, peer2peer file sharing and web browsers. More specifically, FootPrints now offers:

- Global visibility and management of anti-virus and other endpoint security products
- A single console to deploy anti-virus definition updates or apply security settings to the browser without having to define special commands for an individual vendor
- Out-of-the-box compliance templates, customizable compliance alerts and customizable dashboards
- Holistic control of your anti-virus solutions including updates and scans, policy-based security configurations and vulnerable data entry points



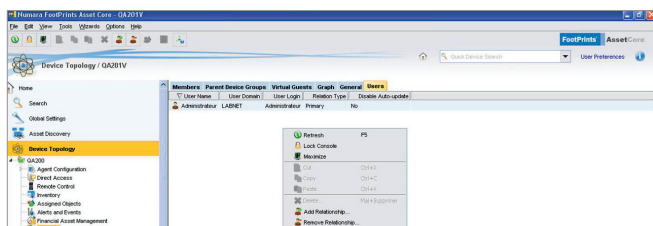
Security Configuration Management includes customizable security compliance dashboards.



User-Focused Management: Improve customer satisfaction, reduce helpdesk tickets and increase workforce productivity

A user-focused management approach frees the IT administrator to focus on the user instead of the multitude of devices that the user may leverage to productively do their job. FootPrints 11 greatly simplifies the process of organizing and deploying business standards and policies across the entire organization. Policies now follow the users as they move from platform to platform in order to accomplish their jobs. More specifically, FootPrints now allows administrators to:

- Support user and group profile management
- Auto-discover or assign user-to-device relationships
- Reduce valuable time spent on manually defining who is a user of a device
- Apply software, security, deployment and other policies to a group instead of the device



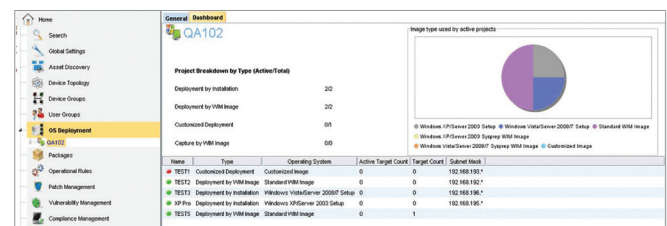
Primary User is automatically detected and a relationship is created between user and device.



Operating System Deployment: Reduce time creating, managing and deploying OS images

FootPrints 11 includes enhancements for creating, managing and deploying operating system images:

- Faster deployment project builds
- Multiple active deployment projects
- PXE boot menu
- Project Dashboards
- Automatic Driver Detection
- Driver Tagging for better organization and management
- TFTP Proxy for supporting scenarios when a switch manages DHCP



OSD Manager Dashboards provide insight into deployment project status